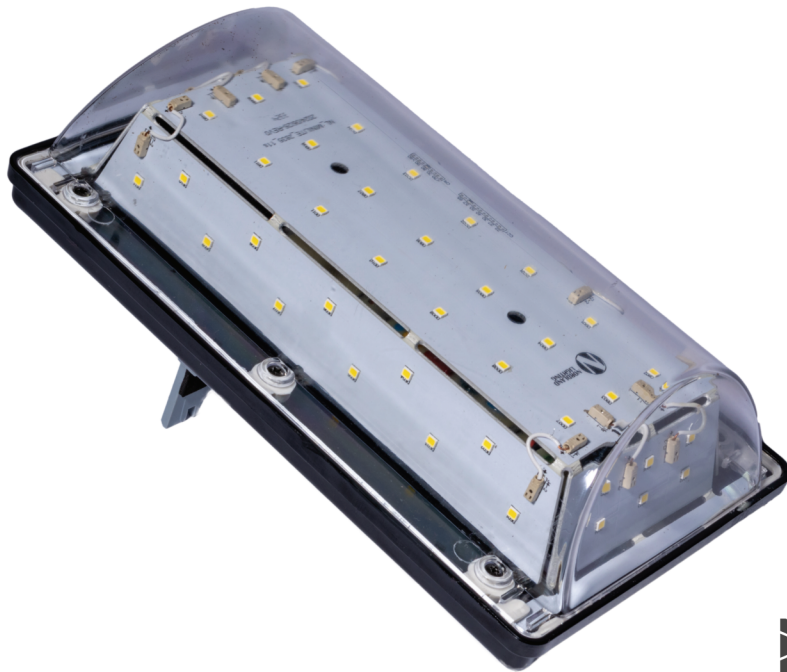


Minilite Mark 3



Made in RSA



Management System
ISO 9001:2015
www.tuv.com
ID: 310587702



Overview

- **Energy Efficiency:** The Minilite Mark 3 uses LED technology, ensuring low power consumption while maintaining high brightness and performance.
- **Durability & Robust Design:** Built with high-quality materials, it offers strong resistance to environmental factors such as dust, moisture, and impact.
- **Long Lifespan:** Designed for extended operational life, reducing maintenance and replacement costs over time.
- **Superior Illumination:** Provides bright, uniform lighting with excellent color rendering, improving visibility in various applications.
- **Versatile Mounting Options:** Can be installed in multiple configurations, making it suitable for different environments and mounting surfaces.
- **Low Maintenance Requirements:** Engineered for reliability with minimal upkeep, reducing operational disruptions and maintenance costs.

Applications



Mining and Surface Areas



Oil and Gas



Industrial



Outdoor Areas



Haulage

Bulkhead - Haulage - Mining

PERFORMANCE DATA

Model Name	Minilite 14W Mark 3
Wattage (W) +- 5% variance	14 W
Nominal Flux (Lumen)	2013
System Flux (Lumen)	1750
System Efficacy (lm/W)	125 lm/W

ELECTRICAL OPERATING DATA

Driver Type	Constant Current
Voltage input, Frequency and Power Factor	12 - 24VDC, 32VAC, 110 - 230VAC +- 10% / 50 or 60Hz / PF > 0.96(Model dependent)
Running Current	0.08A @ 14W (230VAC model)
Allowed Operating Temperature	-15° C to +40° C
Electrical and Thermal Protection	2kV L/N to Earth, 1kV L to N

LED CHARACTERISTICS AND OPTIC DATA

Available Optics	Special LED configuration to allow for upward, sideways and downward lighting
Expected LED Lifespan	>50000 hours @ L70B10 25°C
Colour Rendering Index (CRI)	>80
Correlated Colour Temperature (CCT)	6000K Standard
IES Files	Available on request, Professional Lighting Design services available at no cost

PRODUCT MATERIAL AND INSTALLATION

Housing Material and Finish	Polycarbonate, Grey as standard other colours available on request
Lens and Gasket	Polycarbonate clear lens (other colours available on request / Silicone gasket cemented into groove)
Ingress Protection and IK Rating	IP65 / IK08
Mounting and Installation options	Slideplate mounting standard, other mounting options available upon request

Certifications and Standards Compliance

Standards compliance	SANS 60589-1
ISO QMS	9001:2015

Dimensions and Packaging

Model	Minilite 14W Mark 3
Dimensions (Length x Width x Height) in mm	230 x 127 x 78
Weight (Unit / Packaged) in kg	0.8 / 1.0

Miscellaneous

Contact Nordland	T: 010 442 2809	E: Sales@Nordland.co.za	W: https://Nordland-Lighting.com/
Warranty Details	5 Years (Limited)	T's and C's Available from Nordland	W: https://Nordland-Lighting.com/
Free Services Provided	Lighting Audits	Lighting Designs by Accredited Professionals	Lighting Specification Writing and Tender Detail Assistance

52 Fransen street, Chamdor, Krugersdorp, Johannesburg, South Africa

The information provided in this datasheet is intended for general informational purposes only. Nordland reserves the right to make changes or updates to the specifications, design, and other information contained herein at any time without prior notice. While we strive to ensure the accuracy and completeness of the information provided, we do not guarantee that it is free from errors, omissions, or inaccuracies. Nordland shall not be held liable for any direct, indirect, incidental, or consequential damages arising from the use or reliance on the information contained in this datasheet. It is the responsibility of the user to verify and confirm all information before making any decisions or commitments based on it. For the most up-to-date information, please refer to the latest version of this datasheet or contact Nordland directly.

